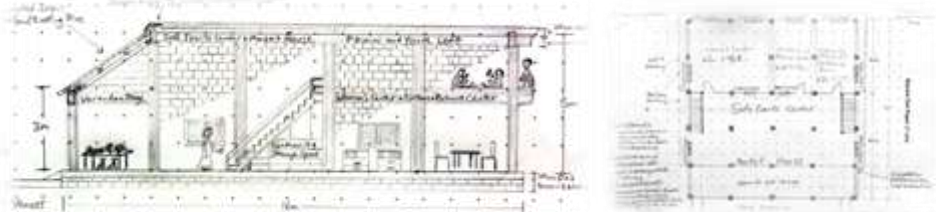


The East Maewo Community Safe House:

A Project to Build a Community Safe House for the Protection and Advancement of the Remote People of East Maewo



Funding Proposal for Government and International Donors



Project Title: The East Maewo Community Safe House

A Project to Build a Community Safe House for the Protection and Advancement of the Remote People of East Maewo

Project Contact Information

Steve Cullen, MBA, US Peace Corps Volunteer -- Education
Satellite Phone: +88 1621455529 (no mobile network in E. Maewo)
Mobile: +678 538 4940
Email: steventcullen@gmail.com)

Funding Proposal Contents

The East Maewo Situation	3
Call to Action for Vanuatu Government and International Funders.....	3
Vision, Goals and Project Impacts.....	4
Beneficiaries.....	4
Project Budget	4
Community Contribution and Support	5
Safe House Project Committee Overview	5
Community Project Experience.....	10
Operations and Sustainability Plan	10
Measuring Project Results and Progress.....	12
Project Work Plan	13
East Maewo Location Overview.....	14
Ground Level Bird's Eye View Design Draft	15
Cross-Sectional Design Draft.....	16
Support Letter from Director of NDMO	17
Support Letter from Secretary General of Penama Province	18
Support Letter from Area Secretary of Maewo	19
Support Letter from Chiefs and Local Leaders (p 1)	20
Support Letter from Chiefs and Local Leaders (p 2)	21
Support Letter from Women of East Maewo	22
Support Letter from Yungfala Girls of East Maewo	23
Support Letter from Yungfala Boys of East Maewo	24
Request for Support to Minister of Climate Change.....	25
Detailed Building Parts List and Calculations	26
Building Construction Quotation	30
Solar System Quotation	36
Computers and Tablets Quotation	38

The East Maewo Situation

East Maewo is a vibrant group of 7 communities with 700+ community members, 2 indigenous languages, and strong custom.

There are no telecommunications in Naviso (on the Eastern coast) and limited government infrastructure exists. There is no certified nurse (pregnant mothers and sick villagers must walk 5 hours one way), and there are not enough trained teachers for the 124 students at Bakanao Primary School. 50 of these students walk 3 hours up and down the mountain each day to get to school.

98% of all the structures in East Maewo are made exclusively out of local materials, such as bamboo and natangura leaves. During Cyclone Pam in March of 2015, less than 300 community members could fit in the school—standing room only. This is about ½ of the population at sea level. About 50 people were forced to stand outside as the wind and rain came down; others had to stay in unsafe structures. People inside were forced to defecate in the school because it lacked toilets nearby. Year round, during festivals, celebrations, meetings and workshops, there is no single place for the entire community to go, especially during inclement weather. Women have no place to gather and organize, except for kitchens and occasional markets. Men currently have a custom meeting place (the nakamal), but women are not allowed to go near these places, as it is taboo for them to enter.

Call to Action for Vanuatu Government and International Funders

We are requesting funding for construction of the East Maewo Community Safe House, a safe, full-cement-block/roof/beam, cyclone-resistant structure (16X15 meters, 2 levels) that will serve as an evacuation center, Women's Center, and Culture and Resource Center. The Safe House not only provides shelter in times of disaster, but it is also provides a safe environment for advancement of woman, young people, people with disabilities, and all members of the community. Additionally, this new structure will be the focal point for the community, as it can hold large meetings and events inside. It will feature a full-time, 7 day per week market. The Safe House will provide a safe and judgment free place for all community members, especially women and youth, to go anytime.

Finally, this central gathering point will provide gainful employment for a Safe House Coordinator staff position; promote weekly events on income generation, education and culture; and serve as a meeting facility to strengthen community governance and committee activities. Technological equipment (solar panels and computers/tablets) will enable the community to preserve their culture, as well as provide a revenue stream (charging and computer usage) for the Safe House facility.

The people of Naviso and East Maewo will be safe and supported in this building. For a community to advance and maintain its heritage in a globalized world, it requires a solid, interactive and evolving structure.

Community Safe House Grounds:

The Safe House building and grounds will be divided into eight areas:

- (1) Women's Center: A place to promote gender equity in the community. It will be used for increasing economic opportunities for families—weaving, soap and oil production, handicrafts, agricultural commodities production, etc.—and for general women's clubs meetings.
- (2) Culture and Resource Center: Books, pamphlets, community history, photos, people records, and other resources are available here. Art, cultural and kastom artifacts, media and recordings will be displayed in physical form and/or on computers. For a small fee, devices may be charged and access to tablets/computers is available.
- (3) Community Office and Conference Room: Houses committee and community business in this office, such as meeting notes, records and other information that gets lost, as there is no place to store it currently. This office will provide permanent storage and accessibility.
- (4) Safe Events Center and Market House: A large inside space for events, lafets, weddings to be used especially in times of inclement weather. Tables will be constructed for market house use, but also so they can block the front entrance during cyclones. These tables will protect against wind and flying debris.
- (5) Nasara and Open Air Venues: Utilized for all day play, special events or custom dance.
- (6) Community Gardens: Food here will be used for special events and fundraisers; displaying unique crops and plants.
- (7) Pikinini and Youth Loft: This is located on the second level and features open space for meeting, learning and play (16m X 6.5m)
- (8) Innovation and Economic Development Area: This area features ground for entrepreneurs to locate their businesses on a rental basis. Furthermore, this is an experimentation area, where community members can display local innovations, such as agriculture, health or educational projects. Ideas can be submitted to Safe House Operations Committee or the Safe House Coordinator.

Vision, Goals and Project Impacts

Goal 1: Build a Disaster-Resistant Community Safe House by March 2016: To protect and advance all youth, mamas, papas, chiefs, committees and community groups in East Maewo by building a disaster-resistant Community Safe House in Naviso Village

→ **Expected Outcomes and Impacts:**

- By August 2015 receive funding for the construction of a disaster-resistant building project
- By February 2016, community will complete initial proposed construction of the Community Safe House. This disaster-resistant building will house 300 to 900 community members during cyclones
- Empowerment of 50+ community members, with representation of all stations, youth, mamas and papas, to take part in the development and construction of the community center

Goal 2: Improve Economic, Social and Gender Development by March 2016: To improve the economic and social situation for the community, especially for mamas, youth and people with disabilities

→ **Expected Outcomes and Impacts:**

- Development of Women's Center where mamas and yungfala girls can have a place to come together
- Full-time market house (24 hours a day, 7 days a week) with steady revenue streams generated by seller membership fees (By January 2016)
- Development of approximately 2 local cooperative businesses run by woman and/or youth for personal income generation and Community Safe House's financial sustainability— i.e. Oil & Soap, take-away food, or specialized mat weaving. Increase production and distribution of mats, oil, soap, spices, and other handicrafts to Port Vila through non-profit, ACTIV (Alternative Communities Trade in Vanuatu), Santo and other distribution partners

Goal 3: Expand Education & Training and Preserve the Kastom of East Maewo By March 2016: To improve access to education, training and resources for all community members and to provide a place to share and preserve the culture and custom ("kastom") of East Maewo

→ **Expected Outcomes and Impacts:**

- Development of Community Safe House Coordinator staff position to organize and plan events, as well as manage operations of the Community Safe House
- A weekly calendar of educational/cultural sessions, markets, trainings, meetings and extra-curricular activities will be maintained. A minimum of 4 sessions per month concerning income generation, skills development, or health promotion will be available for all community members, including programs for the disabled
- Development of a Culture and Resource Center with 100+ cultural artifacts (carvings, weavings, art, media, photos, books, recordings) and technological resources (tablets and laptops) to be housed inside

Beneficiaries

Directly (no. of persons impacted)	700+
Who are they	Children, girls, boys, men and women, elderly, disabled
Indirectly (no. of persons impacted)	4,000
Who are they	Maewo Island citizens via cultural preservation exhibits

Project Budget

Expenditure Item	Grant Amount Requested (vt)*	Community Contribution*	Third-Party Contribution*
Project Budget			
Materials and Construction of Safe House Building (Wilco Quotation)	2,010,110	2,100,000	
Tablets (3) and Laptops (2) for Culture and Resource Center (Computer World Quotation)	201,778		
Solar System (Energy4All Quotation)	285,244		
Shipping from Luganville, Santo to East Maewo Wharf			650,000 ***
Labor		4,352,000	
Cash Fundraising		40,000	*

Land Value (Given free by Gebriel Uresat)			Free	
Totals	2,497,132	6,452,000****	650,000	
% Total Combined Budget	26%	67%	7%	
Requested Project Amount	2,497,132	vatu		
<i>*All costs exclude VAT</i>				
<i>**Projected (23,500 vatu to date)</i>				
<i>***Agreement pending between COPSL Oil Mill and East Maewo to send cargo free of charge on the copra ship</i>				
<i>****See In-Kin Community Contribution sheet below for detailed breakdown</i>				

Community Contribution and Support

The following in-kind support and contribution table outlines the total physical work needed to construct the Community Safe House and associated in-kind costs. Skilled and unskilled labor will be donated by the community. All manpower, food, coral, sand, and ground will be donated by the community in-kind.

In-Kind Community Contribution - Naviso Community Safe					
Item	Description	Cost/Unit	Qty or Qty/day	Days(a)	Total (vt)
Skilled labor	Project design (foreman)	2000		20(b)	40,000
Skilled labor	Carpenters, foreman	2000	8	80	1,280,000
Unskilled labor	Laborers, helpers	1000	20	80	1,600,000
Unskilled labor	Block production	1000	6	40	240,000
Food Preparation labor	Cooks	500	10	80	400,000
Meals	per meal (1 per day)	300		80	792000(d)
Sand (per bag)(c)	per bag	1000	700		700,000
Coral (per bag)(c)	per bag	1000	1400		1,400,000
Total In-Kind Contribution					6,452,000
Fundraising Contribution					40,000
Total Community Contribution					6,492,000
(a) 20 days per month working					
(b) Total hours to complete design of the community safe house					
(c) Using 1:2:4 Ratio - Cement to Sand to Coral - 350 bags of cement					
(d) Calculated 300 vatu per working-day per man					

Safe House Project Committee Overview

The 15 member Safe House Project Committee represents the communities of East Maewo in its efforts to develop a multi-purpose community center. Through these efforts, the community has raised funds (23,500 vatu) to support construction of a physical building and grounds. The committee unites the people of the community; develops plans for the project; executes all stages of the project with support from general community members.

To date January-May 2014, the project committee has completed the following:

- Two workshops (total of 18 hours) to decide and plan the project
- Built a notice board as first group development activity
- Held 8 planning meetings (total of 30+ hours)
- Hiked 7 total hours across the mountain from East to West Maewo to meet with the French Embassy to discuss grant opportunities
- Papas member and Secretary, Derikson Boe, attended project management training with Peace Corps in Port Vila
- Mamas member, Hana Boe, went to trainings in Port Vila on women's empowerment, made possible by ACTIV Association and the French Embassy
- Fundraised and organized celebration on National Women's Day to raise money for the Safe House

-Worked with the community to clear the grounds where the future Safe House will stand

Committee Rules:

- 1) Absences –
First Absence: Talk with committee member, ask why they were not present
Second Absence: Talk with committee member, ask why they were not present
Third Absence: If non-excusable, removal from committee, selection of new member.
The committee wants every member on the committee to be active.
- 2) Come at the right time to every meeting
- 3) We speak with one voice to the community and world
- 4) Every committee member should feel free to share their thoughts and talk freely
- 5) There must be respect for every member
- 6) Respect the chairman and think strongly of this person as our leader
- 7) If someone does good work or makes something that is good, be sure to speak of this good work so that they are glad to make it again

When the committee needs something from someone, communications should not pass through another man, it should be asked directly to that person so that the communication is accurate

Committee Member List

Title	Name	Gender
Executive Members		
Chairman	Jonaswin Aru	Male
Vice Chairman	Bretin Sale	Male
Treasurer / Youth Member	Tion Bani	Male
Vice Treasurer	Lineth Boe	Female
Secretary	Derickson Boe	Male
Construction Foreman	Jahndy Ako Vanua	Male
Mamas/Women Committee Members	Anita Loen	Female
	Anna Boe	Female
	Isabel Voi	Female
Papas/Men Committee Members	Paramount Chief Lonstel Boe	Male
	Kastom Chief Gabriel Uresat	Male
	Noris Sale Matah	Male
Youth Committee Members	Jaylin Aru	Female
	Clorian Rolling Buna	Female
Pikinini Member	Marks Jemix Boe Us	Male

Project Manager Overview

The project manager, Steve Cullen, US Peace Corps volunteer, works hand-in-hand with the community. All decisions are either made or approved by the community leaders and committee members. Without the support of these individuals, this project would not be possible.

Steve Cullen holds a Master's Degree in Business Administration from Central Michigan University in the United States with emphasis in International Business, Supply Chain Management and Sustainable Development. In the United States he worked as a project manager and business development manager a global non-profit laboratory. He and his wife, Alexis Cullen, joined Peace Corps as community development volunteers in 2014.

In the community, Steve works primarily in education and Alexis in community health. Steve has been living in the Naviso community for 14 months. He is fluent in Bislama and can speak the two local languages of Naviso. The community has given him kastom rank of “rara”; chiefs, local leaders and community members fully support his involvement in this project.

Peace Corps volunteers are trained to build sustainable projects with full community buy-in. Development of the Community Safe House project began after 8 months into Peace Corps service and after a careful needs assessment process and community workshops. Therefore, Steve will be able to guide the community to successful completion of the project in March 2016.

Committee Activities

Project Committee First Day - January 23, 2015



Community Safe House Project Committee: Top left to right: Isabel (elder member), Tion (Youth Boys Member, Treasurer), Lineth (Vice Treasurer), Bretin (Vice Chairman), Hana, Anita, Alexis (Peace Corps Volunteer). Bottom left to right: Gebriel (village founder and kastom chief), Marks Jemix (Pikinini Member), Noris, Derik (Secretary). Not pictured: Jonaswin (Chairman), Jaylin (Youth Girls Member), Clorian (Youth Girls Member), Jahndy (Construction Foreman), Steve (Peace Corps Volunteer)



Committee's First Project

Following the setup of the Community Safe House Project Committee, the first work day was to make a community notice board to post community business and updates of the Safe House project. This photo is a direct result of the effort. Committee and community members took part in the one day event on January 23, 2015



Hike to Visit French Embassy

On February 11, 2015 the French Embassy Representative, Jenny, made a visit to West Maewo. The project committee was highly motivated to meet the French Embassy and find funding for their project. 10 Project Committee members, including the pikinini member, Jemix, hiked 7+ hours that day, across the island to meet Jenny and back that afternoon. Olfala members sent their verbal support, as they could not make the hike.

National Women's Day and Safe House Fundraiser



On May 15, 2015 on National Women's Day the committee held the first fundraiser to support the construction of the Community Safe House. The women in the community marched, there were speeches and skits to support the day of women. This effort, which included kava, music, and food, raised 23,500 vatu.

First Day of Work – Clearing Bush at the Project Site



May 18, 2015 was the first day of community work. The community cleared the ground, allocated free by the Kastom Chief Gebriel. The ground will continually be cleaned. A storage shed, fence, toilet and community gardens will be added to this ground over the next several months.

Community Project Experience

The East Maewo communities have had experiences with projects over the last several years. Although not numerous, the community has sufficient knowledge to manage a project to completion.

- Japanese Embassy Funded Bakanao Primary School Classroom (30mX7.5m double classroom) – 2014
 - Construction completed by Naviso community with support from foreman in West Maewo
- Peace Corps Funded Water Supply – 2012
 - Water committee developed through assistance of Peace Corps volunteer Nik Karr
 - Project completed within one month of supplies reaching East Maewo
- Peace Corps Managed / Australian High Commission Funded VIP Toilets Project – 2012
 - Toilet slabs and VIP pipes constructed by Water Committee. Walls constructed and holes dug by community members.
- Mamalu Vanua Dispensary and Staff House Construction
 - Construction completed by the community and still in operation after 10 years

Operations and Sustainability Plan

- 1) **Initial Fundraising:** May 2015 - Fundraising for project to reach 40,000 vatu (23,500 to date)
- 2) **Training Plan:** Peace Corps trainings to educate committees, community and Safe House Coordinator about benefits of Community Safe House
 - a) “Operations & Maintenance Modules” (For Committees)
 - i) “Running Our Community Safe House”: Workshop covers: Budgeting (part 1), financial management, maintenance, procurement, office management, and fundraising.
 - ii) “Community Advancement”: Workshop covers: Cultural preservation methods; computers and technology, solar management, maintenance of technology, future improvements
 - iii) “Our Successful Community Safe House”: Workshop covers: short-term/long-term planning, activities coordination, office staff development, calendars, monitoring and evaluation. Part 2 of budgeting and operations management.
 - b) “Our Community Safe House” – Series for Community Awareness. How to make use of the Community Safe House
- 3) **Financial Sustainability Plan:** Community Safe House is free to all, but services still will fund its operations:

Revenue Item	Example Calculation Estimate	Total Vatu Generated
Specialized Skills Trainings: Some free, but specialized trainings fee-based	<i>6 per year X 20 attendees X 300 vatu fee per training</i>	36000
Culture and Resource Center: Computer/tablet-use hourly fee. Weekly/Monthly rates available.	<i>100 hours per month X 12 months X 50 per hour</i>	60000
Culture and Resource Center: Device charging	<i>50 charges per month X 12 months X 50 vatu per charge</i>	30000
Market House: Fees per month or per day (plan will be selected by the Market and Economic Sub-Committee)	<i>100 mamas X 50 vatu per month X 12 months</i>	60000
Guest House: Space available for visitors (daily rate)	<i>5 guests per month X 12 months X 300 vatu per night</i>	18000
Large Events: Space available for parties, large meetings and events (hourly/daily rates)	<i>1 event per month X 12 months X 1000 per event</i>	12000
Weekly Kava Nights	<i>20 vatu income per shell X 100 shells X est. 45 weeks per year</i>	90000
Grounds Space Rental: Rental fees charged per year for ground used to house businesses on-site. Two spaces will be made available	<i>Two Spaces X 10,000 per Year</i>	20000
Cooperative Businesses: Develop markets and/or cooperative groups w/ mamas and youth—(i.e. soap, oil, mat weaving, etc.)	<i>5% safe house contribution fee on exported goods to Vila or other markets X 250,000 vatu estimated sales</i>	12500

Total Revenues	338500
Estimated Yearly Salary for Safe House Coordinator	150,000
Estimated Operations and Maintenance Costs	150,000
Total Costs	300,000
Estimated Operating Surplus	38,500

4) **Operational Considerations**

a) After Project Completion, Change from Project Committee to Permanent Safe House Operations Committee

- i) A review and reselection of committee members will be conducted. It is important to find committee members interested in working for the long-term.
- ii) Every two years, the committee must revisit its membership and revote. If members are not fulfilling responsibilities, they will be automatically removed from the committee at end of term. A letter of intent must be written if the committee member would like to continue service.
- iii) A secret ballot vote during Naviso Tarrsur Village Council yearly meetings must take place for all members coming to term. Any and all community members, young and old, are encouraged to apply and be considered for nomination to the committee.

b) Staff Development

- i) Currently one staff position (Safe House Coordinator) has been allocated as a pilot. This role requires a person with good writing, math and leadership skills. The person must be diligent, entrepreneurial and faithful to work. Additional staff will depend upon the success after the pilot period of 6 months. Finally, work hours and days will be implemented at the discretion of the operations committee

c) Book-keeping

- i) Financial records and budgeting are the responsibility of the Safe House Coordinator, committee treasurer and chairman. They must seek final unanimous consensus from the operations committee. Yearly budgets are required (finalized by December 31) and monthly cash flow or operating statements must be kept to ensure good financial standing. Other required records or documents will be specified by the operations committee.

d) Resources, Operations and Maintenance Records

- i) These are the responsibility of Safe House Coordinator to maintain. Items needing or receiving maintenance are recorded with the date and issue.
- ii) Books or resources in the Culture and Resource Center must be checked out and recorded with the name, date, resource item number. Fines must be collected for damaged items or actions taken to restrict use of resources in case of misuse. Coordination with the Bakanao School Library on management and resource procurement is encouraged.
- iii) All cultural resources will be housed and managed in the Culture and Resource Center. New items should be recorded based on the Cultural Sub-Committee's criteria for resource preservation. The coordinator is responsible for maintaining and recording new resources, as well as Cultural Sub-Committee members.
- iv) The Construction Sub-Committee is responsible for advising and carrying out repairs of property and equipment.

e) Market and Economic Activities

- i) It is the responsibility of the Safe House Coordinator to collect market house membership and other fees. Fees must be paid prior to service, without exception.
- ii) The Market and Economic Sub-Committee is responsible for ongoing development of this program area. The coordinator is responsible to liaise with this sub-committee.

f) Social and Educational Activities

- i) The coordinator is responsible for keeping and updating weekly programmatic activities. These will be displayed publicly and advertised to increase attendance
- ii) The operations committee and coordinator are responsible for inviting guests, maintaining programmatic activities and constantly evolving the lineup of these events to engage the community.
- iii) The Cultural and Social Sub-Committee is responsible for maintaining monthly cultural events. This Sub-Committee will work with coordinator to carry out and plan these events.
- iv) The Education and Training Sub-Committee is responsible for weekly training, education, social development, health or economic events. This Sub-Committee will work with coordinator to carry out and plan these events.

g) Grounds and Safe House Improvements

- i) The Safe House Coordinator and operations committee are responsible for keeping the grounds maintained and

- cleaned at all times
- ii) Any new developments or issues should be reported and shared between the committee and the coordinator. If the coordinator seeks to do something outside of his/her area of responsibility, this must be approved by the committee chairman prior to execution.
- iii) The Construction Sub-Committee is responsible for advising and carrying out construction of physical upgrades.
- h) Innovation and Economic Development Area
 - i) Community ideas for developing this area can be submitted to the Safe House Coordinator. All ideas must be approved by the operations committee chairman before construction may begin.
 - ii) For entrepreneurial activity, rent must be collected prior to construction and/or prior to the period where the rent is incurred. Rent fees should be negotiated with the chairman and decisions based on the financial standing of the Safe House. Rent should be set higher if the Safe House has low income projections.

Measuring Project Results and Progress

We believe that this project will provide positive and long-term impacts socially, culturally, and economically for the people of East Maewo and will create lasting change for pikinini, yungfala and women.

Although the general impacts may be hard to measure, below is an M&E Table to determine whether our project meets some measurable outcomes:

Monitoring and Evaluation Table

Monitoring / Evaluation Question	Qualitative or Quantitative	Method of Checking	Time of Check	Person Responsible	Target
Number out of the total committee members attending trainings	Quantitative	Physical counting	After Trainings	Steve Cullen	15 (100%)
Number of Training Participants who believe they have skills to adequately manage the Community Safe House in all operational areas	Qualitative	Survey	At closing of committee Training	Steve Cullen	15 (100%)
Community Awareness: Number of Attendees who are highly likely to use the Safe House 1+ times per week	Quantitative	Survey	End of Awareness	Project Committee	75% of total
Number of Community Members Taking Part in Construction Efforts (record age and gender)	Quantitative	Physical counting	Weekly records	Foreman	50+
Number of cultural artifacts preserved	Quantitative	Counting, digitally saved, backed up	Count every 6 months	Safe House Coordinator; Cultural Sub-Committee	100+
Number of People using Safe House 2+ times per week	Quantitative	Survey / Physical Counting	Weekly Records – first 3 months, 6 months and 12 months	Safe House Coordinator	200
How are community members using the Safe House?	Qualitative	Survey	Monthly Surveys and Feedback forms	Safe House Coordinator	
How can the Safe House be improved?	Qualitative	Survey	Monthly Surveys and Feedback forms	Safe House Coordinator	

Project Work Plan

Development Activity	Tasks	Start Date	Completion Date	Responsible Party	Jan 2015	Feb 2015	Mar 2015	Apr 2015	May 2015	Jun 2015	Jul 2015	Aug 2015	Sep 2015	Oct 2015	Nov 2015	Dec 2015	Jan 2016	Feb 2016	Mar 2016
Project Selection and Planning	Community Needs Assessment Workshop and Project Selection	9-Jan-15	10-Jan-15	Steve Cullen, Peace Corps															
	First Project Committee Meeting - Policies and Rules Development	23-Jan-15	23-Jan-15	Project Committee															
	Community Notice Board Construction	24-Jan-15	24-Jan-15	Project Committee													Completed		
	Project Committee Visit to French Embassy Project Manager	11-Feb-15	11-Feb-15	Project Committee													In-Progress		
	Project Sub-Committee Creation (Construction, Economic, Cultural and Social, Education and Training)	6-Feb-15	28-Feb-15	Derik, Ana, Sandy, Lineth, Lonstel													Future Task		
	National Women's Day Community Fundraising Program	15-May-15	15-May-15	Project Committee															
	Project Committee Planning	23-Jan-15	20-May-15	Peace Corps and Project Committee															
	Design and Quotation Finalization	14-Apr-15	25-May-15	Steve Cullen, Peace Corps															
	Open Bank Account with NBV	2-Jun-15	2-Jun-15	Treasurers Tion/Lineth															
	Grant Application Submissions to Donors	26-May-15	23-Jun-15	Steve Cullen, Peace Corps															
Project Site Preparation	Clean, Cut and Burn bush on future project site	18-May-15	18-May-15	Community															
	Add water pipe and tap on project site	18-May-15	30-May-15	Water Committee															
	Planning, Ordering of Materials and Construction of Storage Sheds at Project Site and Sea Shore	20-May-15	20-Jun-15	Construction Sub-Committee															
	Outdoor Toilet Construction (Male and Female)	20-May-15	20-Jun-15	Construction Sub-Committee															
	"Coming Soon" Project Site Sign Creation	10-Jun-15	20-Jun-15	Construction Sub-Committee															
	Fence Construction and Community Garden Planting	18-May-15	20-Aug-15	Community, Project Committee															
	Community Contribution of Cement Block Manufacturing (Sea Shore)	1-Aug-15	1-Oct-15	Construction Sub-Committee															
Training and Workshop Series Rollout	"Running Our Community Center" (Operations, Transparency and Ethics Training) Workshop	20-Aug-15	21-Aug-15	Peace Corps															
	"Community Advancement" (Cultural Preservation and Technology) Workshop	17-Sep-15	18-Sep-15	Peace Corps															
	"Our Successful Community Center" (Activity Scheduling, Long-term Planning) Workshop	15-Oct-15	16-Oct-15	Peace Corps															
	"Our Community Project" - Community Project Awareness and Preparedness Workshop	22-Oct-15	22-Oct-15	Project Committee and Community Center Staff															
Construction Start Contingent upon Receipt of Grant Funds																			
Project Rollout	Ordering and Purchase of Materials	1-Oct-15	15-Oct-15	Construction Sub-Committee															
	Hauling of Coral and Sand	26-Oct-15	15-Nov-15	Community															
	Receipt of Materials - Project Start	1-Dec-15	1-Dec-15	Construction Sub-Committee															
	Building Foundation	1-Dec-15	15-Dec-15	Construction Sub-Committee and Community															
	Beams, Walls and Offices	15-Dec-15	15-Jan-16	Construction Sub-Committee and Community															
	Roof Construction	15-Jan-16	1-Feb-16	Construction Sub-Committee and Community															
	Finished Carpentry and Ancillary Construction Tasks	1-Feb-16	25-Feb-16	Construction Sub-Committee and Community															
Grand Opening	Grand Opening Celebration for Cyclone Season	1-Mar-16	1-Mar-16	Project Committee and Community															
	First Community Activities Open	2-Mar-16	2-Mar-16	Building Staff															

East Maewo Location Overview

East Maewo is made up of 700+ people with 7 stations in two regions—Naviso (500+ people) and Ngota (200+ people). Youth represent approximately 30-40% of population. There are two indigenous languages spoken and understood by all. East Maewo is known as having the strongest kastom in all of Maewo. It is a vibrant and lush place, with gardens and plantations extending for many kilometers to the North, South and West. It is a happy and friendly place with a culture unique in Vanuatu. The men and women of East Maewo believe in hard work, know how to live without Western goods, and persist onward, regardless of their daily struggles.



generation in East Maewo.

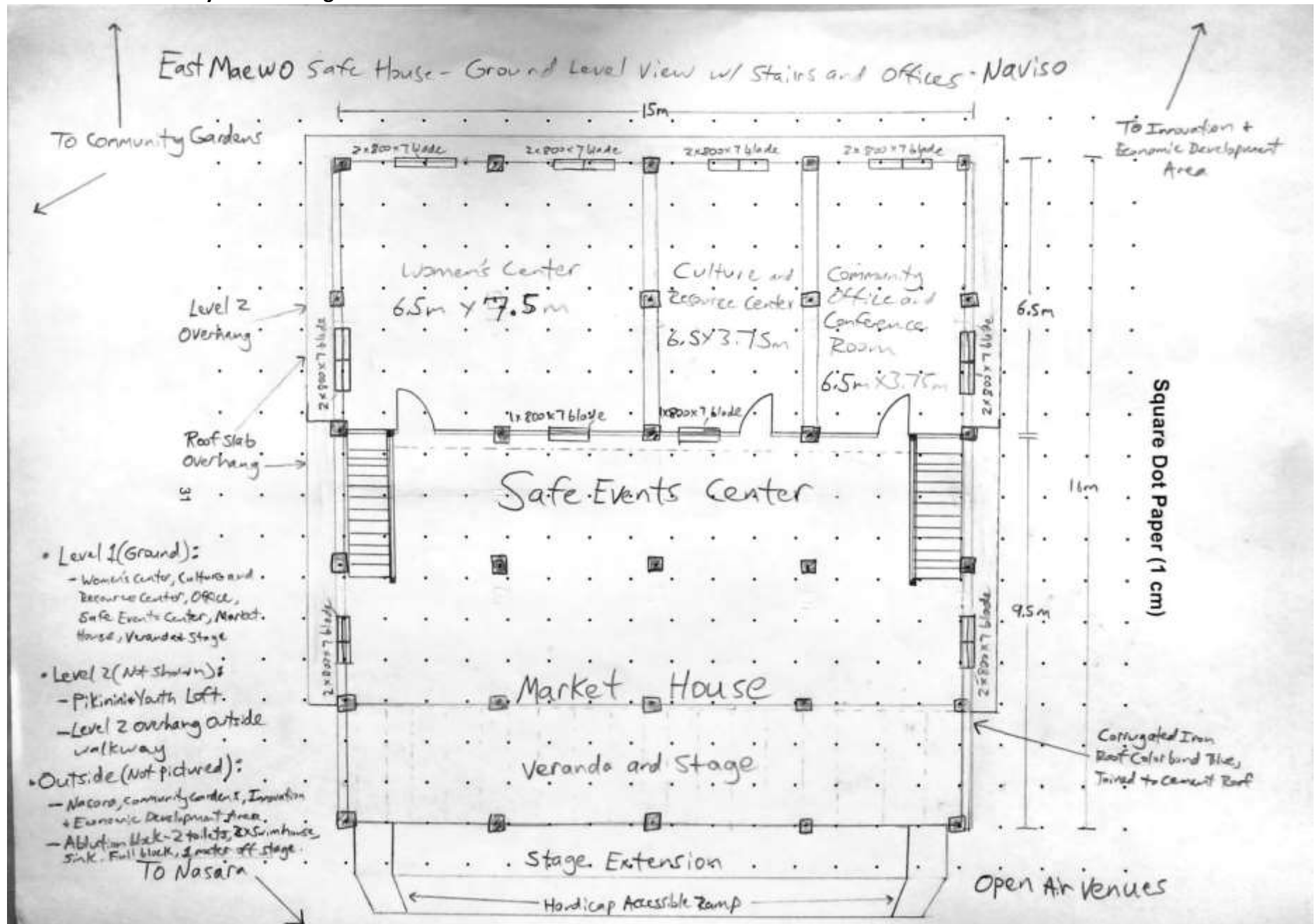


Naviso, East Maewo is in a disaster-prone area, exposed to the open Pacific Ocean to the East [see maps below]. Naviso is in a remote place: a 5 hour hike over a mountain for pregnant mothers to see the nearest nurse. In Naviso there are no adequate truck roads, no telecommunication networks, and no certified teachers to support the primary school's 124 students. This at-risk population has been marginalized by the government and private sectors' inaction and systematic exclusion. Numerous pleas to the government by Peace Corps and community members—for a road, telecommunications, nurse, certified teachers, etc. have gone unanswered and unfulfilled. The road was extended from Qwatiowol to Ngota (2km) in March 2015; but limited funding stopped the project short and left it without a tangible plan for completion. The "new" road is already in poor condition after two months of rain (March-May). Most truck drivers refuse to travel it and charge exorbitant prices per trip (7,000 vt).

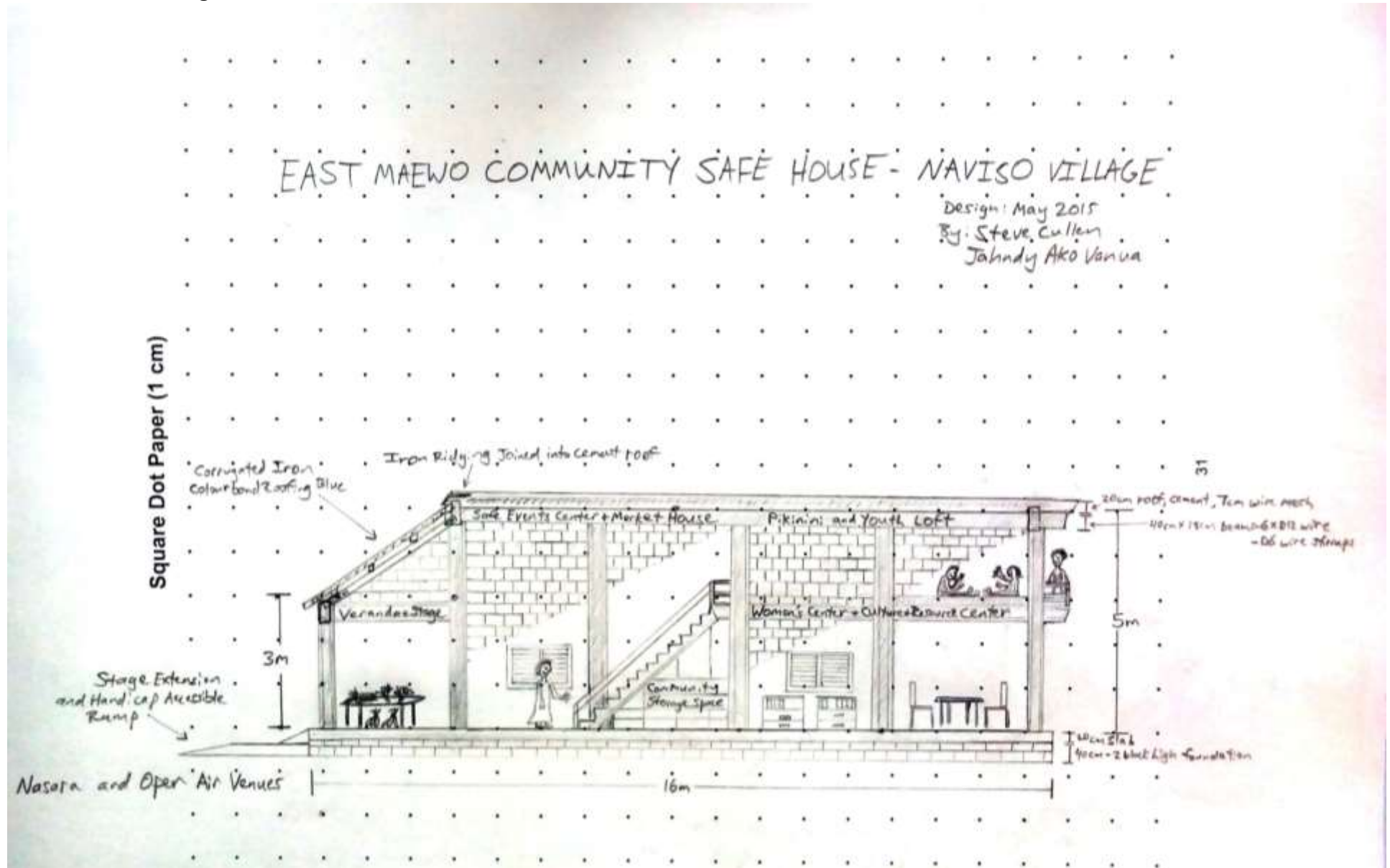
Three chiefly councils preside over these areas (Naviso, Lalaundi and Ngota). The Naviso communities are led by Paramount Chief Lonstel Boe and Lalaundi Chief Benat Aru. Ngota is led by Chief John Dadleu and Vice Chief Moris Sale. Third Deputy Vice President of Penama Province, Counselor Philip Aru, is based in Naviso and holds formal authority for provincial government-related activities. The Kastom Chief and Village founder of Naviso, Gebriel Uresat owns the land where the Community Safe House will be located. He has given full rights for the community to use this land, free of charge.

Copra is the primary income source. Secondary income sources are kava, food markets, baskets and mats. Average household income per year is about 100,000 vatu. The cargo ship comes only about 3-4 times per year to purchase copra and stock stores. To combat these barriers, the Naviso Safe House has goals to improve education, training and income

Ground Level Bird's Eye View Design Draft



Cross-Sectional Design Draft



Support Letter from Director of NDMO



Government of the Republic of Vanuatu
National Disaster Management Office
Phone: +678 22699 / +678 23035 Email: ndmo@vanuatu.gov.vu
Post: NDMO, Private Mail Bag 9107, Port Vila, Vanuatu



25th May 2015

To Whom It May Concern:

Subject: Support Letter for the Construction of the East Maewo Community Safe House

This letter is written to support the project initiated by the people of East Maewo, a remote population of 700+ community members. Naviso Village (East Maewo), where this project will be constructed, is located on the Eastern coast of Vanuatu and exposed to the open Pacific Ocean.

In light of the aftermath brought on by Category 5 Cyclone Pam, projects to protect communities from future disasters are encouraged, especially in our disaster-prone region. The Vanuatu National Disaster Management Office officially supports the construction of the East Maewo Community Safe House, as it serves to safeguard community members in times of disaster.

This "Safe House" project not only will provide a safe place during disasters, but it aims to promote empowerment of women, youth and children; to improve training and education; to strengthen the voice of the community; and to preserve kastom and culture. Yet, building resources and good income-generating opportunities are scarce on this side of the island due to its remoteness, making projects like these difficult to fund from the grassroots level. Furthermore, the resources of the Vanuatu government often do not reach citizens of remote villages due to logistical and infrastructural constraints. Therefore, we kindly ask for your assistance of this project for the benefit of our fellow Ni-Vanuatu citizens.

With Sincere Thanks,


Shadrack Welegtabit

Director NDMO



Support Letter from Secretary General of Penama Province

REPUBLIC OF VANUATU
Penama Provincial Government,
Department of Provincial Affairs,
Ministry of Internal Affairs,
Saratamata, East Ambae.



REPUBLIQUE DU VANUATU
Conseil de Provincial Penama,
Bureau des Affaires Provincial,
Ministère des Affaires Intérieures,
Saratamata, Est Ambae.

Telephone (678) 38 348 / 38 415 Fax (678) 38 414 BP 08 Email: Penama@vanuatu.com.vu

To: Whom IT MAY CONCERN

From: Assistant Secretary General of Penama Provincial Government Council

Date: 21 May 2015

Subject: Support Letter for the Construction of East Maewo Community Safe House

I write to support the project initiated by the people of Naviso Village on East Maewo in constructing a safe house for the East Maewo community to run community business, workshops gatherings, a place for market and women's centre to congregate people especially women in order to improve their skills.

The main idea of the project has been endorsed by the Penama Corporate Plan whereby the community of Naviso Village took one step ahead in capacity building women to generate cash income and in order to improve their quality of life of the whole community including marginalised groups.

This project is in with the Penama Provincial Government Council, addressing the **Goal I: Promote Socio Economic Development in the province.**

Currently Naviso Community members have no safe house to accommodate such activity but to travel a fair way to access.

I thank your organization for continuous support to the development of Penama Province and I look forward in working with you to implement this project once it is considered and funded.

I remain,

Yours Sincerely

A handwritten signature in blue ink, appearing to read 'Mannel Ure'.

Mannel Ure
Assistant Secretary General of Penama Province



Cc : Planning Unit of Penama Provincial Government

NANU BANI
BANGAN VANUA AREA COUNCIL
KEREPE
NORTH MAEWO
PHONE - 7113985/5490482



DATE: 20/5/2015

TO Whom it may CONCERN

Dear Sir/Madam -

Mi olsem Area Secretary blong
Bangan Vanua Area Council, mi stap raet
blong sapotem tingting blong population
blong ol man NARISO blong gat wan
Community Safe House.

Too House ia i save helpem ol man
NARISO to taem blo wan disaster mo
even save helpem ol mama to taem blo
weaving blo olgeta.

Thankya tumas to understanding

Yours

NANU BANI

ADMINISTRATOR

Date: 18 May 2015

To: International Aid Donors and Vanuatu
Government Offices.

NAVISO Village
East Maewo
Penama Province

SUBJECT Letter of Support from Chiefs and Community
Leaders for Construction of the East Maewo Community
Safe House.

We are writing concerning the matter above.

Naviso Village is located on the remote Eastern Part of Maewo in Penama Province. It is one of the neglected Places in Vanuatu where the Government never bothers to consider us in terms of assistance. Yet the Population here is one of the largest in Maewo. With this Population, we are asking your respected office to help us with this request. Evacuation

Purpose of the Safe House

- 1 A Safe Place during cyclones.
- 2 For running Community business. Workshops, gatherings, Meetings etc.
- 3 Place for Women's center and Market House.
- 4 Place to build up our skills and training
- 5 Place to hold Culture and Custom of East Maewo

With these reasons, we the Leaders in this Community ask for your help and support our request and make possible efforts so that we can successfully complete this Community Project.

We are looking forward to receiving a reply at your earliest convenience.

Yours Sincerely,

The komiti blong East Maewo wetem
Safet from ol Lidas:

The Chairman blong NDMD Registered
Disasta Komiti.

Chairman of Village Council Project Komiti ^{Jaru} Jonas ARU.

Chairman of Disasta Community Mizah Boe myBoe

Secretary of Safe House Project Komiti Boe

Chiefs

L.Boe

Birry

Joe

The President of ^{NAVISO and Lakaundi Village, Ngota, Moris Sale}
^{Linget Boe} ^{Perat Aru} Penama Province

Custom chief Gulmesat

Third Vice President of Penama Province Philip Aru PT

U S Peace Corps Volunteer Jim Cullen

Father Ebeneser Boe Boe

2nd PA Francis Boe Boe

Naviso

East Maewo

Penama Province

RE. Letter of Support of Naviso Women

Dear Sir,

Mifala ol woman blong Naviso Community i wantem expressem sapot blong mifala from sabjek we i Star antap.

Naviso hemi wan blong ol remote eria long Vanuatu. Hemi gat wan populesen we i kasem 400. Mifala ol mama i wantem tumas blong gat wan sef haos blo disaster we bae mifala i save sef insaed long taem blong hurricane. Mo bae i helpem mifala ol mama blong mekem market insaed, mo wivim mat, basket, somap ol klos mo save holom ol workshops tu insaed.

Thank yu tumas long understanding mo cooperation.

Women Blong Naviso.

Boe Charity Boe

May Lini

Cristael Pita

Linieth Boe

Iris Aru

Elanson Rolling

Naviso
East Maewo
Penama Province

DATE: 19 May 2015

Subjekt: Lota blong Sapot: Yungfala Gel i Saplen komiuniti
Sef Haos projekt
Dear Sir

Mifala ol yungfala gel mifala i wantem
tumas se komiuniti sef haos i mas
stop from mifala i save sef insaed long
taem blong disasta, no taem ol mama
oli wivim mat, basket, no bat. Mifala ol
yungfala gel mifala i save sidaon wetem
olgeta blong lanem wanem we oli stop makem.
Ating hemia nomo smol tingting blong mifala
ol pikinini gel

Thank you tumas,

Sign: MELRID BOE

- LILIAN LEO
- MAENALYN BOE
- TWILALYN BOE
- DELINDA BOE
- VANISSA BOE
- ELESY SAE
- JANNETH BOE
- ASHLEY ROLLING
- LINTHA TOARES
- SPRING BOE
- LINSTEL BOE
- CLINDA BOE
-
-

leta blong Supot: Date: Tuesday 19th May 2015
Subject: Yungfala Boe i wanem komuniti sef Haos
Pia Se,

Mifala ol yungfala boe, mifala i wanem
wan komuniti sef Haos blong seven
Mifala mo helpen mifala long taem blong
Sae kion, mo mifala i save lanem
arts and kraft mo save lanem fulap
samting insaed long haos ia.

Tankin

Thom son - Saru

Deniel Boe

Danson Boe

Shong

Roddy

Jayson

Wilford

Rockliff

Marks Jemix Boe us

Request for Support to Minister of Climate Change

Tuesday, May 19, 2015

Naviso Village
East Maewo, Penama Province

To: Minister of Climate Change, Mr. James Bule

CC: Prime Minister, Mr. Joe Natuman
Speaker of Parliament, Mr. Philip Boedoro Tambevanua
Minister of Internal Affairs

Subject: Letter of Request from Chiefs and Community Leaders for the Construction of the East Maewo Community Safe House

Dear Honourable Minister of Climate Change,

Folem subject ia antap, bambae mifala i glad tumas sapos yu save helpem komiuniti blong mifala bifo mifala i fesem narafala saeklon long fiuja. Disasta komiti blong mifala i stap wok had tumas folem ol advaes we ofis blong NDMO i stap givim. Long taem we saeklon Pam i stap kam strong, mifala i manejem gud ol man, woman, pikinini, mo samfala samting blong pripearem komiuniti. From tingting ia nao, mifala i nidim wan Safe House.

Mifala i wantem tumas blong yu helpem mifala long em. Long saed blong komiuniti Safe House ia, bambae mifala i sef insaed long taem blong saeklon. Bae hemi helpem mifala blong ranem ol komiuniti bisnis olsem mitings, wokshops mo ol ivens, etc. Insaed long hem bae i kat Women's Center, ples blong bildemap skills mo leftemap save blong mifala. Last samting bae i save holem gud ol kaljarol artifact mo kastom blong mifala.

Therefore, mifala i stap askem yu Honourable Minister blong Climate Change long refrens blong yu blong Badjetem thisfala komiuniti Safe House ia blong mifala i save statem wok long July 2015. Mifala long komiuniti i stap mekem sam sakesful fandresing finis long projekt ia. And so mifala i stap kindly rikwestem se Office blong Climate Change mo Gavman blong Vanuatu blong provaedem ol fand ia.

Plis lukluk long proposal mo badjet we mifala i atajem. Projekt ia bambae i helpem olketa pipol long East Maewo blong oli save sef insaed long taem blong disasta. Mifala i stap askem help long ofis blong yu mo bambae mifala i glad tumas long sapot blong yu.

Tankiu tumas Yours Sincerely,

Chairman blong NDMO Registered Disaster Committee Micah Boe MBE

Wetem sapot blong East Maewo komitis mo lidas,

Chairman blong Vilej Kaonsel mo Safe House Projekt Komiti, Jonas Aru Jonas

Secretary blong Safe House Projekt Komiti, Derik Boe Derik Boe

Paramount Chief, Lonstel Boe L. Boe Lalaundi Chief, Benat Aru B. Aru Ngata Chief
Moris Sale

3rd Deputy Vice President Penama Province, Counselor Philip Aru Philip Aru

Kastom Jif, Gebriel Uresat G. Uresat Chief 2nd PA, Francis Boe Francis Boe

Father Ebeneser Boe Ebeneser Boe

U.S. Peace Corps Volunteer, Steve Cullen Steve Cullen

Detailed Building Parts List and Calculations

This design could feasibly house up to 921 people during cyclones, standing room only. However, it would comfortably hold 368 people.

- Slab and Foundation: The slab utilizes a strong cement mix and D6 wire spaced at approximately 1 meter in grid pattern. The foundation is elevated with two rows of blocks.
- Blocks and Walls: Blocks cover the majority of the structure, except for the veranda. During cyclones, tables (constructed from plywood and 100X50 timber) will be chained and locked to the cement pillars for protection. Blocks are gridded with D10 wire and connected to beams and roof mesh.
- Roof: Features coated corrugated iron roofing as veranda. Ridging is cemented and joined into cement roof, which uses 7 mm steel mesh. Cross beams support the structure and connect with cement pillars. Beams use 6 X D12 wires in a rectangular pattern. Pillars feature 4 X D16 wires. D6 wire stirrups are used frequently and evenly spaced to provide rigidity.
- Second Level (Loft): The loft is supported by cross beams and made with the same materials as the roof (mesh and cement).
- Please see the list of parts below and drawings for more details

Building Cyclone Capacity	Events Center	Loft	Offices	Total
Sq meters	135	102.2	94.25	331.45 m ²
Standing	375	284	262	921
Sleeping	150	114	105	368

Corrugated Iron Roof Estimates	
23.57	number of kappa lengths for one side of house 700mm includes overlap
24	round up pieces
24	both sides of house
96 m	number of piece X 4 meter length piece kappa

DETAILED PARTS LIST	Qty Rqd	Qty in Units	Unit s Sold	Descriptions and Calculations	
Corrugated Iron Roofing (Strong version, coated)	24	96	MTR		
NAIL ROOF Gal Plain 60x3.75 2.5KG	2	2	Bag		
Flashing (sides)	4	16	MTR	2 per side X 4 sides	
Ridging (Long edge)	18	36	MTR	16.5 meter wide (200 overlap) X 4+ per side X2 sides (extra piece to make up for difference)	
Short Rafter (150X50)	9	54	MTR	10 for each side (about 4m each), cemented into center roof	
Bellings (100X50)	12	72	MTR	Cross supports 6 meter lengths (3 for whole 16.5 length) X 4 rows X 1 side	
100X50 Cross beam for ridging	6	36	MTR	3 lengthX2 lines	
Bolts + washer + nut (150X50 joint)	40	40.00	Set	10 bolts X 2 sides * 2 kappa sections	
Fishtail bracket	40	40.00	EA	one on each side of timber (2) X 2 sides X 10 rafter	
Fresher Board (200X25)	25	30	LM	1 side X 16.5m long side + 4m short + 4m short (5 boards)	
Cement roof	0	55	BAG	Total dimensions = 16.5 X 14	
PLASTIC Black 2000mm x 100mtr per roll (80 UM thickness)	116	120	MTR	115.5	16.5*10 / 2m height for rolls X 1meter sections
PLYWOOD China Ext 12mm x 1220 x 2440 BD Face	20	20	SH	Divided into 3 sections = 5.375 X 10(reuse plywood for each section)	
MESH Reinforcing F72 7mm x 5800 x 2300 (663)	18	19	SH	3 long X 5.8m X 6 wide X 2.3m	

50X50 framing timber for plywood	6	28.8	MTR		
Clear Plastic Kappa Laserlite	4	1	EA		
Cement Post				30 cement posts (20X20cm)	
5m	20	6	BAG	0.2	volume per post
3m	5	1	BAG	0.1	volume per post
Wire D16 (5m posts)	81	81	EA		4X every post X # posts
Wire D12 (3m posts)	10	10	EA		4X #posts / 2 (cut them in half)
Wire D6 (5m posts) - stirups	74	74	EA	16.7	Rings per post = every 300 going on top. 5m / 300 spacing
Wire D6 (3m posts) - stirups	7	7	EA	8.3	2.5/300spacing
Cement beam					
Stage beam cement	1	1	BAG	0.93	15.5mlength X 400 X 150
Wire D6 stirups	7	7	EA	41.3	stirups meters = 15.5 / .3 X .8meter
Wire D10 stage beam	10	11	EA	62	15.5m X 4 lines
Short cement beam	5	5	BAG	0.9	volume short 15m (1 meter overhang) X150X400 X 5 beams
Long cement beam	5	5	BAG	0.99	volume long 16.5X150X400 X 5 beams
Wire D6 links	45	46	EA	269.1666667	Qty lns = 16.5X5 + 14X5 / 300cm spacing *.8mtr length
Wire D12	153	155	EA	152.5	(16.5X5 long beams + 14X5 short width beams)X6 wires in each beam /6 meter lengths
Slab (15m X 16 m) cement Extension	42	45	BAG	37.5	calculation of slab volume at 20cm thickness
Wire D6 (long side)	48	50	EA	48	16 lines X 3 lengths
Wire D6 (short side)	45	47	EA	45	15 lines X 3 lengths + use extra wire that was cut to connect .5m short gap for each line
PLASTIC Black 2000mm x 100mtr per roll (80 UM thickness)	120	140	MTR	120	20mX12.5m / 2m height for rolls X 1meter sections --> Use extra roll length from roof
Foundation blocks	310	310	BAG	310	2 lines X [((Length 16/.4)X 2side) + (Wide 15/.4)X2]
Extension 10X4 slab only	13	14	BAG	12	volume = 10 X 4 X .3m thickness
Walls					
Cement Bag	38	200	BAG		
Wire D10	150	150	EA	See blocks calculation	
TIE WIRE Black 5kg x 1.6mm #16 317.07m	3	3	ROLL		
Office					
Office Window					
1.6 wide windows (2X800) - 7 Pane (6 windows)					
Louvre Frame Aluminum PVC 7 Blade	12	6	PAIR		come in pairs
Louvre Glass Clear 800X150X5mm	6	84	EA		Extra added due to breakage
150X50 Wood Frame	6	36	MTR	5.7	Outside linear measurement of window: 1.6m +.2 extra outside X 2 + 1050 w/ pains + 10 cm extra top,bottom
FLYSCREEN F/Glass Char 1220mm 50M Cyclone		15	MTR		
Moulding Screen Strap (8 windows)		12			
Screen nails (8 windows)		1	BAG		
Doors					

DOOR H/Core 6 Panel HUME Pacific 2040*820*35	4	4	EA		
HINGE Lift Off Right Hand ZP 120mm CD2	2	2	EA		
HINGE Lift Off Left Hand ZP 120mm CD2	2	2	EA		
100X50 Door Frame	4	24	MTR		2m+2m+1m = 5m frame X2
Entrance Set	4	4	EA		
Events Center 800 wide windows 7 Pane (4 windows)					
Louvre Frame Aluminum PVC 7 Blade	4	2	PAIR		come in pairs
Louvre Glass Clear 800X150X5mm	4	33	EA		Extra added due to breakage
150X50 Wood Frame	16	18	MTR	4.1	Outside linear measurement of window: .8m +.2 extra outside X 2 + 1050 w/ pains + 10 cm extra top,bottom
Ablution Block (2X toilets + 1 shower)					
TOILET Suite Close Coupled S-Trap Rnd-Sun 2022 set 150	2	2	EA		
PAN COLLAR PVC M&F DWV 100mm Iplex	2	2	EA		
PIPE 100mm x 5.6Mtr DWV PVC	2	2	EA		
BEND PVC DWV Plain F&F 100mmx45Deg Iplex	3	3	EA		
BASIN Wall Villa 500 1TH w/waste Duraplex052005	0	0	EA		
SHOWER Set B.J C/P PLUMBWORX	1	1	EA		
PIPE 50mm x 5.6Mtr DWV PVC	2	2	EA		
BEND PVC Plain F&F 50mmx88° IPLEX050	3	3	EA		
PIPE Poly Black 20mmx200m/150m PN12.5 (Sold Per Mtr)	20	20	MTR		
SINK Kitchen Single Bowl Polish/Electric Plating 620x490x180	1	1	EA		
Trap Combination S&P 50m					
Sink Tap	1	1	EA		
Hepworth Connector Reducing Tee Poly 22mm x 18mm x18mm	1	1	EA		
CONNECTOR End Poly 20mm x 1 2 MI	1	1	EA		
Roofing Corrugated Color	5	20	MTR		
PINE NZ 150 x 50 Treated H3.2 CCA PG F2 TW MSG61	3	14.4	MTR		
100X 50	3	18	MTR		
Cement	2	2	BAG	1.777777778	
Blocks Cement	6	6	BAG	150	blocks 5 wide X 8 high X 5 walls
Wire D6	3	3	EA	3 estimation	Use local wood as bellings/rafter
Silicone	5	5	EA		
Miscellaneous					
Water Tank and Components					
TANK Water 4000L	1	1	EA		
GUTTER Spouting Pvc Stormcloud 3m White MARLEY	3	3	EA		
PIPE Downpipe Round 80mmx3m White MARLEY	1	1	EA		
BRACKET Spouting White MARLEY	12	12	EA		
Elbow					
Connector					
DULUX Professional Ext Semi-Gloss Acrylic gray 20LT	2	2	EA		
DULUX Professional Ext Semi-Gloss Acrylic geen 10LT	2	2	EA		
STRAP Cyclone 25mmx.91mmx30m G300+	1	1	ROLL S		1 roll for each kappa side
NAIL Plate Coil 102mmx15m MITEK	1	1	Roll	roll	
NAIL Flat Head Galv 100x4.5mm 1kg	8	8	EA		
NAIL Flat Head Galv 50x2.8mm 1kg	2	2	EA		
NAIL FLAT HD GAL 75x3.75 5KG	1	1	EA		

NAIL Flat Head Galv 125x5.6mm 1kg	4	4	EA		
Wood glue	2	2	LITER		
Tables					
PINE NZ 50 x 50 Treated H3.2 CCA PG F2 TW MSG6.	30	126	MTR	115.2	2.4side X2 + 1.2 side X 2 +2.4 cross
PINE NZ 50 x 50 Treated H3.2 CCA PG F2 TW MSG6.	9	54	MTR	48	4legs X 12 tables
RESENE Qrystal Polyurethane Clear Flat 4L	2	2	EA		
Loft Slab (15X8)	27	30	BAG	24	calculation of slab volume at 20cm thickness
PLASTIC Black 2000mm x 100mtr per roll (80 UM thickness)	60	70	MTR	60	15X8 / 2m height for rolls X 1meter sections
MESH Reinforcing F72 7mm x 5800 x 2300 (663)	12	13	SH	3 X 5.8m	
Short cement beam	2	3	BAG	0.48	volume short 15m (1 meter overhang) X150X400 X 5 beams
Long cement beam	3	3	BAG	0.99	volume long 16.5X150X400 X 3 beams
Wire D6 links	34	35	EA	202.5	Qty lns = 16.5X3 + 9X5 / 300cm spacing *.8mtr length
Wire D12	95	97	EA	94.5	(16.5X5 long beams + 9X5 short width beams)X6 wires in each beam /6 meter lengths
Loft Railings (100X50)	51	54	MTR		2 Lines X 3 (6meter lengths) +10 posts X 1 5 meter height
Stairs					1meter wide X4meters deep X2.5 height Divided by two (triangle) = 5 cubic meters
Cement north	6	6	BAG	5	m3 (if completely full)
Wire D6	4	4	EA		
Wire D10	4	4	EA		
100X50 railing timber	10	10.8	MTR	9.716990566	#meters for railings = Hypoteneus X 3 railings + 2.5m post +1.5m post + 1m post
Cement South	6	6	BAG	5	m3
Wire D6	4	4	EA		
Wire D12	4	4	EA		
100X50 railing timber	10	10.8	MTR	9.716990566	#meters for railings = Hypoteneus X 3 railings + 2.5m post +1.5m post + 1m post

Building Construction Quotation

Wilco Hardware
QUOTE

25/05/2015 10:35:14 Page: 1



cash		CASH
Phone:	Fax:	

Deliver To

NAVISO COMMUNITY SAFE
HOUSE
C/O STEVE CULLEN
5384940

P.O.Box 219
Luganville
Vanuatu
Phone: (678) 37774
Fax: (678) 37775
CT# 14296

Quote No: 1-103943 Operator: Jessica Tanghwa Expiry Date: 15/05/2015 Processed: 25/05/2015

Code	Description	Qty	Unit	Price	Discount	Amount
CB24	ROOFING Corrugated Colourbond 24 Gauge 24/4.00 blue	96.00	MTR	1,640 vt		139,947 vt
9310086908543	NAIL ROOF Gal Plain 60x3.75 2.5KG	2.00	EA	2,055 vt	10.00% Net	3,288 vt
2000561	BARGE Colorbond 24 Gauge Per Meter 4/4.00	16.00	MTR	2,265 vt		32,213 vt
2000558	RIDGING Colorbond 24 Gauge Per Meter 9/4.00	36.00	MTR	2,170 vt		69,440 vt
15050	PINE NZ 150 x 50 Treated H3.2 CCA PG F2 TW MSG6 9/6.00	54.00	LM	640 vt	10.00% Net	27,648 vt
10050	PINE NZ 100 x 50 Treated H3.2 CCA PG F2 TW MSG6 12/6.00	72.00	LM	420 vt	10.00% Net	24,192 vt
9310086485013	WASHER FLAT MTRC HDG M12 each	40.00	EA	20 vt	10.00% Net	640 vt
9415343000364	BRACKET Post 50mmx345mmx5mm B75 MITEK	40.00	EA	1,055 vt	10.00% Net	33,760 vt
9310086485587	BOLT/N CUPMTRCHDG M12x120 each	40.00	EA	155 vt	10.00% Net	4,960 vt
20025	PINE NZ 200 x 25 H3.2 PG Standard Dressed Radiata CCA 5/6.00	30.00	LM	480 vt	10.00% Net	11,040 vt
2000818	FIJI CEMENT General Purpose 40Kg WILCO SANTO	55.00	BAG	995 vt	2.00% Net	47,672 vt
5050	PINE NZ 50 x 50 Treated H3.2 CCA PG F2 TW MSG6. 6/4.80	28.80	LM	230 vt	10.00% Net	5,299 vt
9317314520348	ROOFING Laserlite x 3.60m Roma Opal	1.00	EA	8,428 vt	10.00% Net	6,742 vt
2000818	FIJI CEMENT General Purpose 40Kg WILCO SANTO	7.00	BAG	995 vt	1.00% Net	6,129 vt
2000818	FIJI CEMENT General Purpose 40Kg WILCO SANTO	4.00	BAG	995 vt	1.00% Net	3,502 vt
2000818	FIJI CEMENT General Purpose 40Kg WILCO SANTO	3.00	BAG	995 vt	1.00% Net	2,627 vt

Wilco Hardware
QUOTE

25/05/2015 10:35:14 Page: 2



cash		CASH
Phone:	Fax:	

Deliver To

 NAVISO COMMUNITY SAFE
 HOUSE
 C/O STEVE CULLEN
 5384940

P.O.Box 219
 Luganville
 Vanuatu
 Phone: (678) 37774
 Fax: (678) 37775
 CT # 14296

Quote No: 1-103943 Operator: Jessica Tanghwa Expiry Date: 15/05/2015 Processed: 25/05/2015

Code	Description	Qty	Unit	Price	Discount	Amount
2000818	FIJI CEMENT General Purpose 40Kg WILCO SANTO	5.00	BAG	995 vt	1.00% Net	4,378 vt
2000074	STEEL ROD D16mm x 6000mm Deformed G500N	100.00	LN	1,680 vt	10.00% Net	134,400 vt
2000818	FIJI CEMENT General Purpose 40Kg WILCO SANTO	45.00	BAG	995 vt	2.00% Net	39,004 vt
2000818	FIJI CEMENT General Purpose 40Kg WILCO SANTO	30.00	BAG	995 vt	2.00% Net	26,003 vt
2000818	FIJI CEMENT General Purpose 40Kg WILCO SANTO	200.00	BAG	995 vt	3.50% Net	170,698 vt
9420037509412	TIE WIRE Black 5kg x 1.6mm #16 317.07m	3.00	CL	1,510 vt	10.00% Net	3,624 vt
15050	PINE NZ 150 x 50 Treated H3.2 CCA PG F2 TW MSG6 6/5.00	36.00	LM	640 vt	10.00% Net	18,432 vt
9312620529504	FLYSCREEN F/Glass Char 1220mm 50M Cyclone	15.00	MTR	290 vt	10.00% Net	3,480 vt
9314557017055	DOOR H/Core 6 Panel HUME Pacific 2040*820*35	4.00	EA	10,165 vt	10.00% Net	32,528 vt
9310086607033	HINGE Lift Off Right Hand ZP 120mm CD2	2.00	EA	1,125 vt	10.00% Net	1,800 vt
9310086607026	HINGE Lift Off Left Hand ZP 120mm CD2	2.00	EA	1,110 vt	10.00% Net	1,776 vt
9310086960008	ENTRANCE Set PB CD1 SP Parma	4.00	EA	1,905 vt	10.00% Net	6,096 vt
2000665	LOUVRE Frame Alum PVC 7 Blade	8.00	PAIR	2,260 vt	10.00% Net	14,464 vt
2002615	LOUVRE Glass Clear 800x150x5mm	117.00	EA	165 vt	10.00% Net	15,444 vt
15050	PINE NZ 150 x 50 Treated H3.2 CCA PG F2 TW MSG6 3/5.00	18.00	LM	640 vt	10.00% Net	9,216 vt
10050	PINE NZ 100 x 50 Treated H3.2 CCA PG F2 TW MSG6 1/4.80	4.80	LM	420 vt	10.00% Net	1,613 vt
2000439	MOULDING D Mould 30mmx8mm x3m LOCAL	12.00	LN	605 vt	10.00% Net	5,808 vt

Wilco Hardware
QUOTE

25/05/2015 10:35:14 Page: 3



cash		CASH
Phone:	Fax:	

Deliver To

NAVISO COMMUNITY SAFE
HOUSE
C/O STEVE CULLEN
5384940

P.O.Box 219
Luganville
Vanuatu
Phone: (678) 37774
Fax: (678) 37775
CT # 14206

Quote No: 1-103943 Operator: Jessica Tanghwa Expiry Date: 15/05/2015 Processed: 25/05/2015

Code	Description	Qty	Unit	Price	Discount	Amount
1202025160251	NAIL FLAT HD Galv 025x1.60mm	1.00	EA	610 vt	10.00% Net	488 vt
052006	TOILET Suite Close Coupled S-Trap Rnd-Sun 2022 set 150	2.00	EA	15,900 vt	10.00% Net	25,440 vt
9316712001711	PAN COLLAR PVC M&F DWV 100mm Iplex	2.00	EA	1,325 vt	10.00% Net	2,120 vt
9314654024512	HOSE Flexi Water 8 x 600mm 1/2" F/Flat PLUMBWO	2.00	EA	795 vt	10.00% Net	1,272 vt
9322798001559	TAP Cock Cistern Mini Chrom	2.00	EA	875 vt	10.00% Net	1,400 vt
9312232209023	TAPE Teflon Pink High Density 12mmx6m BOSTON	2.00	EA	220 vt	10.00% Net	352 vt
201710056	PIPE 100mm x 5.6Mtr DWV PVC	2.00	LN	4,915 vt	10.00% Net	7,864 vt
9311381150255	BEND PVC DWV Plain F&F 100mmx45Deg Iplex	3.00	EA	625 vt	10.00% Net	1,500 vt
PE100252.3	PIPE Poly Black 25mmx100mtrs PE10025 (Sold Per Mtr)	20.00	MTR	225 vt	10.00% Net	3,600 vt
D6249P	SINK Kitchen Single Bowl Polish/Electric Plating 620x490x180	1.00	EA	4,415 vt	10.00% Net	3,532 vt
9311381520034	TRAP Combination S&P 50mm	1.00	EA	895 vt	10.00% Net	716 vt
1000554	SINK Tap Wall W/Tap CP [DE116A] DOE	1.00	EA	4,785 vt	10.00% Net	3,828 vt
CB24	ROOFING Corrugated Colourbond 24 Gauge 5/4.00	20.00	MTR	1,640 vt		29,156 vt
2000818	FIJI CEMENT General Purpose 40Kg WILCO SANTO	2.00	BAG	995 vt	1.00% Net	1,751 vt
2000818	FIJI CEMENT General Purpose 40Kg WILCO SANTO	6.00	BAG	995 vt	1.00% Net	5,254 vt
9403097083009	SILICONE All Purpose 310ml ADOS	5.00	EA	1,220 vt	10.00% Net	4,880 vt
1000906	GUTTER Spouting Pvc Stormcloud 3m White MARLEY	3.00	LN	2,440 vt	10.00% Net	5,856 vt
1000566	PIPE Downpipe Round 80mmx3m White MARLEY	1.00	LN	2,840 vt	10.00% Net	2,272 vt



cash		CASH
Phone:	Fax:	

Deliver To

 NAVISO COMMUNITY SAFE
 HOUSE
 C/O STEVE CULLEN
 5384940

P.O.Box 219
 Luganville
 Vanuatu
 Phone: (678) 37774
 Fax: (678) 37775
 CT # 14206

Quote No: 1-103943 Operator: Jessica Tanghwa Expiry Date: 15/05/2015 Processed: 25/05/2015

Code	Description	Qty	Unit	Price	Discount	Amount
9414661163836	BRACKET Spouting White MARLEY	12.00	EA	75 vt	10.00% Net	720 vt
9418022034209	RESENE Acrylic Semi-Gloss White 20LT Decorator dark grey	2.00	EA	22,165 vt	10.00% Net	35,464 vt
9418022007135	RESENE Acrylic Semi Gloss White 10L Decorator light green	2.00	EA	11,260 vt	10.00% Net	18,016 vt
9415343011384	STRAP Cyclone 25mmx.91mmx30m	1.00	CL	6,005 vt	10.00% Net	4,804 vt
1202125560251	NAIL Flat Head Galv 125x5.6mm 1kg	4.00	EA	395 vt	10.00% Net	1,264 vt
9310086908369	NAIL FLAT HD GAL 75x3.75 5KG	1.00	EA	3,585 vt	10.00% Net	2,868 vt
1202050280251	NAIL Flat Head Galv 50x2.8mm 1kg	2.00	EA	380 vt	10.00% Net	608 vt
1202100450251	NAIL Flat Head Galv 100x4.5mm 1kg	8.00	EA	380 vt	10.00% Net	2,432 vt
9414302020306	ADHESIVE Aquadhere Exterior 1L SELLEYS	2.00	EA	1,900 vt	10.00% Net	3,040 vt
5050	PINE NZ 50 x 50 Treated H3.2 CCA PG F2 TW MSG6. 21/6.00	126.00	LM	230 vt	10.00% Net	23,184 vt
5050	PINE NZ 50 x 50 Treated H3.2 CCA PG F2 TW MSG6. 9/6.00	54.00	LM	230 vt	10.00% Net	9,936 vt
9418022004226	RESENE Crystal Polyurethane Clear Gloss 4L	2.00	EA	5,265 vt	10.00% Net	8,424 vt
2000796	PLYWOOD China Form 15mm x 1220 x 2440 Painted Edge	20.00	SH	5,855 vt	10.00% Net	93,680 vt
2000073	STEEL ROD D12mm x 6000mm Deformed G500N	169.00	LN	930 vt	10.00% Net	125,736 vt
2000818	FIJI CEMENT General Purpose 40Kg WILCO SANTO	30.00	BAG	995 vt	2.00% Net	26,003 vt
1012302000224	PLASTIC Black 2000mm x 100mtr per roll (80 UM thickness)	330.00	MTR	105 vt	10.00% Net	27,720 vt
200088	MESH Reinforcing F72 7mm x 5800 x 2300 (663)	32.00	SH	8,000 vt	10.00% Net	204,800 vt



cash		<small>CASH</small>
Phone:	Fax:	

Deliver To

 NAVISO COMMUNITY SAFE
 HOUSE
 C/O STEVE CULLEN
 5384940

P.O.Box 219
 Luganville
 Vanuatu
 Phone: (678) 37774
 Fax: (678) 37775
 CT # 14206

Quote No: 1-103943 Operator: Jessica Tanghwa Expiry Date: 15/05/2015 Processed: 25/05/2015

Code	Description	Qty	Unit	Price	Discount	Amount
2000818	FIJI CEMENT General Purpose 40Kg WILCO SANTO	6.00	BAG	995 vt	1.00% Net	6,254 vt
10050	PINE NZ 100 x 50 Treated H3.2 CCA PG F2 TW MSG6 2/5.40	10.80	LM	420 vt	10.00% Net	3,629 vt
2000818	FIJI CEMENT General Purpose 40Kg WILCO SANTO	7.00	BAG	995 vt	1.00% Net	6,129 vt
2000071	STEEL ROD R6mm x 5800mm Plain G300	423.00	LN	240 vt	10.00% Net	81,216 vt
2001120	STEEL ROD D10mm x 6000mm Deformed G500N	173.00	LN	655 vt	10.00% Net	90,652 vt
10050	PINE NZ 100 x 50 Treated H3.2 CCA PG F2 TW MSG6 2/5.40	10.80	LM	420 vt	10.00% Net	3,629 vt
9314058041047	SHOWER Set B.J C/P PLUMBWORX	1.00	EA	4,435 vt	10.00% Net	3,548 vt
20065056	PIPE 50mm x 5.6Mtr DWV PVC	2.00	LN	2,305 vt	10.00% Net	3,688 vt
05079002	JOINER POL Metric 25x25mm	1.00	EA	175 vt	10.00% Net	140 vt
05079086	TEE POL 3G Metric 25x25x25mm	1.00	EA	295 vt	10.00% Net	236 vt
05079008	JOINER Reducing POL Metric 25mmx20mm	1.00	EA	160 vt	10.00% Net	128 vt
8025351105527	JOINER Reducing POL 3G Metric 20x16mm BSP PHILMAC	1.00	EA	1,020 vt	10.00% Net	816 vt
0520200	PIPE Poly Black 20mmx200m/150m PN12.5 (Sold Per Mtr)	0.50	MTR	125 vt	10.00% Net	50 vt
1000785	PIPE Poly Black 16mmx300m PN12.5 (Sold Per Mtr)	4.00	MTR	105 vt	10.00% Net	336 vt
15050	PINE NZ 150 x 50 Treated H3.2 CCA PG F2 TW MSG6 3/5.40	16.20	LM	640 vt	10.00% Net	8,294 vt
10050	PINE NZ 100 x 50 Treated H3.2 CCA PG F2 TW MSG6 3/6.00	18.00	LM	420 vt	10.00% Net	6,048 vt
FG013	TANK Water 4000Ltr Stakeable Rotmould (Fiji) Limited	1.00	EA	103,590 vt	10.00% Net	82,872 vt

Wilco Hardware
QUOTE

25/05/2015 10:35:14 Page: 6



P.O.Box 219
Luganville
Vanuatu
Phone: (678) 37774
Fax: (678) 37775
CT # 14206

cash

CASH

Deliver To

NAVISO COMMUNITY SAFE
HOUSE
C/O STEVE CULLEN
5384940

Phone:

Fax:

Quote No: 1-103943

Operator: Jessica Tanghwa

Expiry Date: 15/05/2015 Processed: 25/05/2015

Code	Description	Qty	Unit	Price		Discount	Amount
9414661010185	STOPEND Combination RH MARLEY	1.00	EA	130 vt		10.00% Net	104 vt
9414661018914	BEND Socket 112 Deg 80mm MARLEY	1.00	EA	615 vt		10.00% Net	492 vt
9414661010482	OUTLET Expansion 80mm w/Backplate MARLEY	1.00	EA	715 vt		10.00% Net	572 vt
9415343010288	NAIL Plate Coil 102mmx15m MITEK ADDITIONAL	1.00	CL	15,185 vt		10.00% Net	12,148 vt
2000818	FIJI CEMENT General Purpose 40Kg WILCO SANTO	6.00	BAG	995 vt		1.00% Net	5,254 vt
2000071	STEEL ROD R6mm x 5800mm Plain G300	35.00	LN	240 vt		10.00% Net	6,720 vt
2000073	STEEL ROD D12mm x 6000mm Deformed G500N	97.00	LN	930 vt		10.00% Net	72,168 vt
10050	PINE NZ 100 x 50 Treated H3.2 CCA PG F2 TW MSG6 9/6.00	54.00	LM	420 vt		10.00% Net	18,144 vt

Total: 2,010,110 vt

Comments: VAT FREE

Total VAT Inc. 0 vt

Solar System Quotation

Energy4All

No 3 Mele Road
Port Vila
Vanuatu

QUOTATION

Date	Estimate #
2/25/2015	1751

Name / Address
Naviso East-Maewo Maewo Island



				Rep	Project	
				GK		
Description	Qty	Rate	U/M	VAT	Class	Total
CNPV20024 CNPV 205Watt 24Volts	2	48,000.00	ea	12,000.00		108,000.00
MC4 Connector Male	1	666.66	ea	83.33		750.00
MC4 Connector Female	1	666.66	ea	83.33		750.00
ProStar Regulator 15 Amp without monitor	1	22,222.23	ea	2,777.78		25,000.00
PowerMaster Pure Sine Wave Inverter 650 Watt 24 Volt	1	60,444.44	ea	7,555.56		68,000.00
TUV Twin UV resistant solar cable 4mm red/black	10	1,511.111	m	1,888.89		17,000.00
TUV UV Solar cable 6mm black	2	622.22	m	155.56		1,400.00
TUV UV Solar cable 6mm red	2	622.22	m	155.56		1,400.00
Lug 6mm Cable 8mm Stud Pair	1	177.78	ea	22.22		200.00
Mounting block	1	1,066.67	ea	133.33		1,200.00
Double PowerPoint E02AU6	1	1,777.78	ea	222.22		2,000.00
Assembly board small	1	4,444.44	ea	555.56		5,000.00
Super Start 12V 200AH Battery	2	37,777.775	ea	9,444.44		84,999.99
Valid for 30 days only.				Subtotal		
				VAT		
				Total		

Energy4All

No 3 Mele Road
Port Vila
Vanuatu

QUOTATION


Date	Estimate #
2/25/2015	1751

Name / Address
Naviso East-Maewo Maewo Island



				Rep	Project	
				GK		
Description	Qty	Rate	U/M	VAT	Class	Total
TUV Black UVR Solar cable 25mm black	0.3	3,111.10	m	116.67		1,050.00
Lug 25mm Cable 8mm Stud Pair	1	488.89	ea	61.11		550.00
MC4 Y Branch	1	1,333.34	ea	166.67		1,500.00
Solar Cable 6MM Red 1.5M	1	933.33	ea	116.67		1,050.00
Solar Cable 6MM Black 1.5MM	1	933.33	ea	116.67		1,050.00
Valid for 30 days only.				Subtotal		285,244.42VT
				VAT		35,655.57VT
				Total		320,899.99VT

Computers and Tablets Quotation



COMPUTER WORLD
CALL 22233 | CW@CW.COM.VU
SAVE MONEY, LIVE BETTER

Bank Payment Details:

WESTPAC	ANZ	NBW	BRED
Account Number	Account Number	Account Number	Account Number
2000381273	1474470	0107561001	331753010011
Account Name	Account Name	Account Name	Account Name
Computer World	Computer World	Computer World	Computer World

Direct Deposit: (please include Quote/invoice number (eg "Quote 123456")

Bill To:

Nasion
East Maewo
Community center

CT NUMBER 291093

QUOTATION

Date: 23/02/2015

QUOTATION # **39795**

VAT FREE	Expiration Date

Now There's A Way to LayBy

GET WHAT YOU WANT
FOR LAYBY CALL 22233

Item	Description	Qty	Price	Amount
C55-H5202	Toshiba Satellite C55-H5202 Laptop Intel® Core™ i5-3230 Processor Windows 7 Home Premium 4GB DDR3 1333MHz memory 500GB (5400rpm) hard drive	2	47,111.12	94,222
Dell Venue 7	3 months warranty Dell Venue 7 16GB Android Tablet (NEWEST VERSION) •Android 4.4 KitKat, 8 inches Display •Intel Atom processor Z3480 •1 GB RAM Memory	3	29,111.1111	87,333
External ASUS D...	30 days limited warranty External ASUS DVD Optical - 500W-08D25-U	1	5,244.45	5,244
6-4000D	6-Way Power Board (117P) with Master Switch	1	1,777.778	1,778
LG-LTD	LG LTD BLACK 2.5in USB 3.0 EXTERNAL HD	2	9,600.00	19,200
P2A476	CASE FOR TABLET	3	4,000.00	12,000

Customer Message/ Delivery instructions

EX VAT	VUV 201,778
VAT (12.5%)	VUV 25,222
Total	VUV 227,000

Tel: 678 22233 | Email: sales@cw.com.vu | Web: cw.com.vu

Your Quotation was printed on a cost effective and eco friendly printer